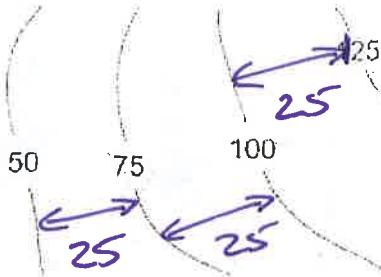


Topographic Maps -- Contour Intervals



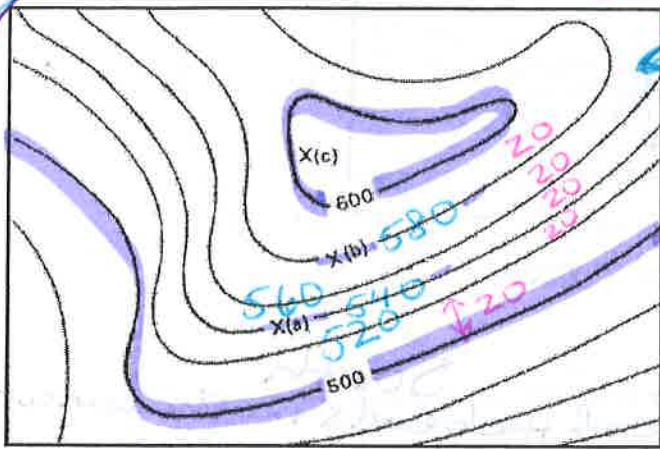
Fact(s) to memorize: 13 - 20



What is the contour interval of this map?

25 ft

one map it should be 620ft for the next line what is one number less than 620ft?



What is the contour interval on this map?

What is the elevation of points (a) and (b)?

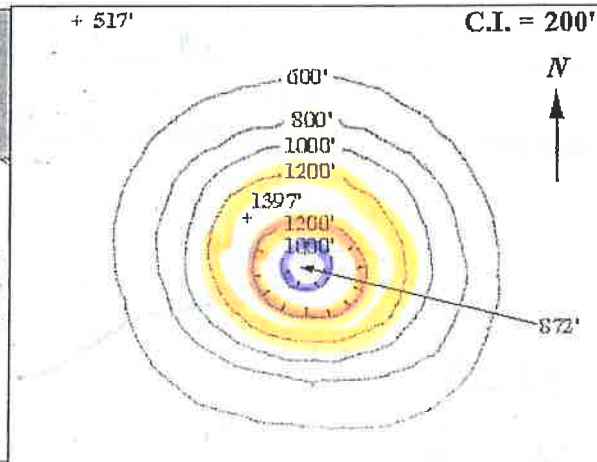
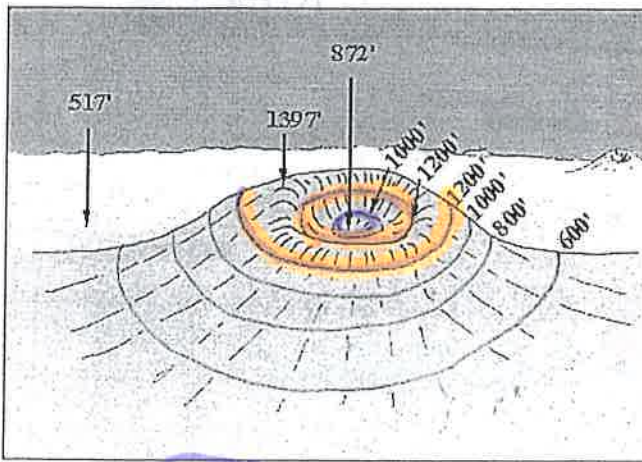
What is the maximum possible elevation of (c)?

a: 540ft
b: 580ft
619ft

For Max Possible Elevation:
Think... if you could draw the next contour line what would it be?
Then one Down from it.

If contour interval is not labeled Find the 2 labeled lines. Subtract the elevations and divide by 5 lines.

$600ft - 500ft$
5 lines.
 $100ft$
5 lines
20ft/line



What do hachured lines show?

decreasing elevation (depressions, pits, holes)

sometimes called depression lines

What are the rules concerning hachured lines?

The first hachured line has the SAME ELEVATION as the previous contour line, then go down by the Contour Interval