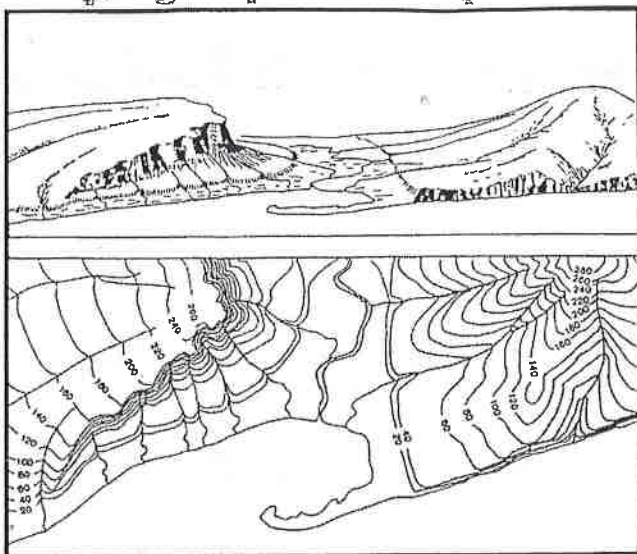


# Topographic Maps

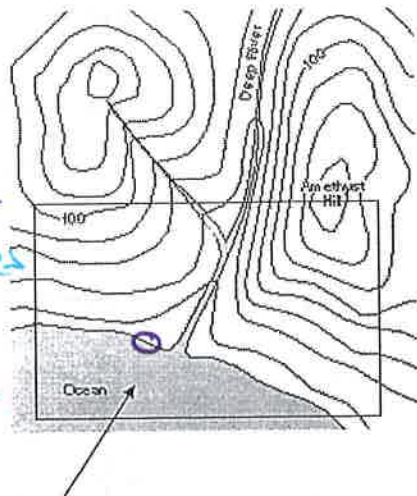


Isolines - Lines that connect equal areas  
everything on the line is the same

Isotherms - Lines that connect equal temperatures

Isobars - Lines that connect equal air pressures

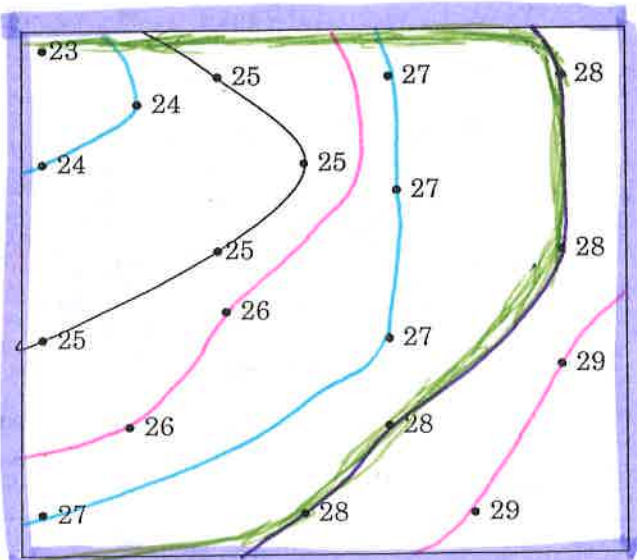
Contour lines - Lines that connect points of elevation



Contour interval The elevation change between contour lines

Drawing isolines:

- Try to locate a pattern where numbers may be bunched together
- The 25 isoline has been drawn on the map to the right
- Follow a similar pattern for the line drawn
- When drawing the 26 isoline, make sure it falls between the 25' and 27 values
- Using a pencil, softly draw a line connecting equal values



Lines NEVER TOUCH

Lines Never go outside the box (map)

Never SQUISH A LINE Between box & Numbers.